

# SHARP

**DX-B450P/DX-B350P**  
Network Printer



**FAST, AFFORDABLE PRINTING FOR  
EVERYDAY OFFICE USE**

**MODEST  
PROPORTIONS  
AND QUIET  
OPERATION**



**UP TO 1,800  
SHEETS PAPER  
CAPACITY\*<sup>1</sup>**

## **AN A4 BLACK & WHITE NETWORK PRINTER FOR EVERY OFFICE**

Capable of up to 43 ppm and with a paper capacity\*<sup>1</sup> that expands all the way up to 1,800 sheets, the compact Sharp DX-B450P gives you all the performance you need at a truly affordable price. What's more, there's a 34 ppm model (DX-B350P) too!

Whichever one you choose, you'll have a fast, efficient network printer that's perfect for printing all of your office documents. True 1,200 dpi resolution guarantees page after page of high quality text and graphics and, with the first page appearing in little more than 8 seconds, everyone stays productive.

### **EASY TO USE AND MANAGE**

Both machines come with a range of advanced print features that make them easy to use and manage. Handy tools such as Web Browser and Printer Status Monitor let you know what the printer is doing without having to leave your desk, and Automated Email Alerts notify you when the toner or paper needs topping up.

In addition, everyone will find it easy to use less paper with the Duplex Module\*<sup>2</sup>, which allows automatic two-sided printing, and busy teams will appreciate the Offset Catch Tray\*<sup>2</sup>, which keeps print jobs separate.

### **ADVANCED SECURITY**

We've given the DX-B450P and DX-B350P robust security features, such as Port Control and IP Filtering which will defeat unauthorised network access. Plus, you can prevent confidential documents from being left lying around in the output tray by requiring the originator to personally enter a PIN at the printer before the job can start.

### **ENVIRONMENTALLY RESPONSIBLE**

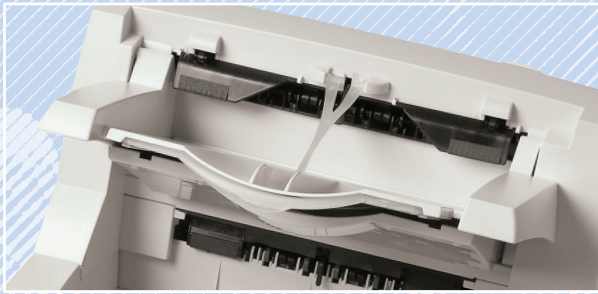
Both machines fully comply with the European Restriction of Hazardous Substances (RoHS) directive and have received multiple environmental accreditations including Energy Star, Blue Angel and Nordic Swan.

\*<sup>1</sup> Based on 75 g/m<sup>2</sup>

\*<sup>2</sup> Optional



43/34 PPM  
IN B/W



500 SHEET  
OFFSET CATCH TRAY\*1

## DX-B450P & DX-B350P KEY FEATURES

### HIGHLY PRODUCTIVE

- Speedy output of max. 43/34 ppm printing
- Quick first print output time of 8.1/8.9 seconds (simplex)
- Extensive paper capacity\*2 of max. 1,800 sheets
- Standard 1 x 150 and 1 x 550 sheet paper drawers
- 500 sheet Offset Catch Tray\*1 for keeping print jobs separate
- Standard future-proofed network connectivity with IPv6
- Direct PDF Printing
- True Adobe PS3 as standard
- Optional 40 GB Hard Drive

### SUPERB IMAGE QUALITY

- True 1,200 x 1,200 dpi ensures finely detailed reproduction

### REMOTE ADMINISTRATION

- Device Management tools include a web browser, e-mail alerts and Printer Status Monitor
- Modify configurations and update firmware using the Printer Maintenance Utility
- Intuitive Print Drivers help simplify operation and improve productivity

### ADVANCED SECURITY FUNCTIONS

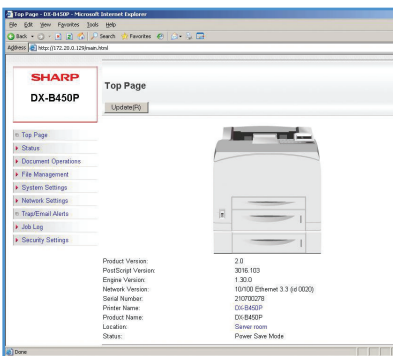
- IP Filtering restricts access to the printer
- Changing web port numbers and disabling protocols limits how stored data can be accessed
- Secure Erase\*1 overwrites the Hard Drive with random data

### REDUCE COSTS AND SAVE ENERGY

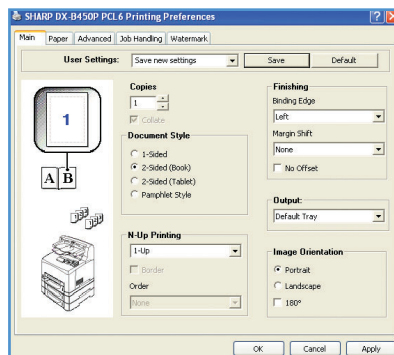
- Duplex Module\*1 for double sided printing will save on paper
- Energy Star, Nordic Swan and Blue Angel accreditations

\*1 Optional

\*2 Based on 75 g/m<sup>2</sup>



Web Browser



Easy-to-Use Print Drivers



FOR EVERYDAY OFFICE USE



# SPECIFICATIONS

General	
<b>Type</b>	Desktop
<b>Engine speed*1 (max.)</b>	A4, portrait
DX-B450P	43 ppm
DX-B350P	34 ppm
<b>Paper size</b>	A6 - A4
<b>Paper weight</b>	64 - 216 g/m <sup>2</sup>
<b>Paper capacity*2</b>	
Standard	700 sheets (1 x 150 sheet drawer and 1 x 550 sheet drawer)
Maximum	1,800 sheets (1 x 150 sheet drawer and 3 x 550 sheet drawers)
<b>Warm up time</b>	17 sec. from power on
<b>Memory</b>	Standard 128 MB Maximum 640 MB User Flash 12 MB
<b>Power consumption (max.)</b>	
DX-B450P	1285W
DX-B350P	1000W
<b>Power requirements</b>	Rated local AC Voltage $\pm$ 10%, 50/60Hz
<b>Dimensions (W x D x H)</b>	421.8 x 465.4 x 404.3 mm
<b>Weight (excludes options)</b>	
DX-B450P	21.1 kg
DX-B350P	20.6 kg

Network Printer	
<b>Resolution</b>	True 1,200 x 1,200 dpi; 600 x 600 dpi
<b>First print output time*3</b>	Simplex
DX-B450P	8.1 sec.
DX-B350P	8.9 sec.
<b>Interface</b>	USB 2.0 High Speed; 10/100BaseT Ethernet (IPv4 & IPv6); IEEE1284 Parallel; RS-232C Serial
<b>Supported OS</b>	Windows® 98, Windows® NT 4, Windows® 2000, Windows® XP, Windows® XP x64, Windows® Server 2003, Windows® Server 2003 x64, Windows® Server 2008, Windows® Server 2008 x64, Windows® Vista, Windows® Vista x64, MAC OS-X: 10.2 -10.5
<b>Network protocols</b>	TCP/IPv4, UDP, BOOTP, DHCP, ARP, ICMP, DDNS, WINS, HTTP, Apple EtherTalk, IPv6, ICMPv6, Bonjour, Netware V5.5, V6.5, POP3, SMTP
<b>Printing protocols</b>	LPR
<b>PDL emulation</b>	PCL5e/PCL6, True Adobe PS3
<b>Available fonts</b>	99 fonts for PCL, 136 fonts for PS3 emulation

\*1 When printing the same document continuously on portrait A4 plain paper in non-offset mode, excluding processing time

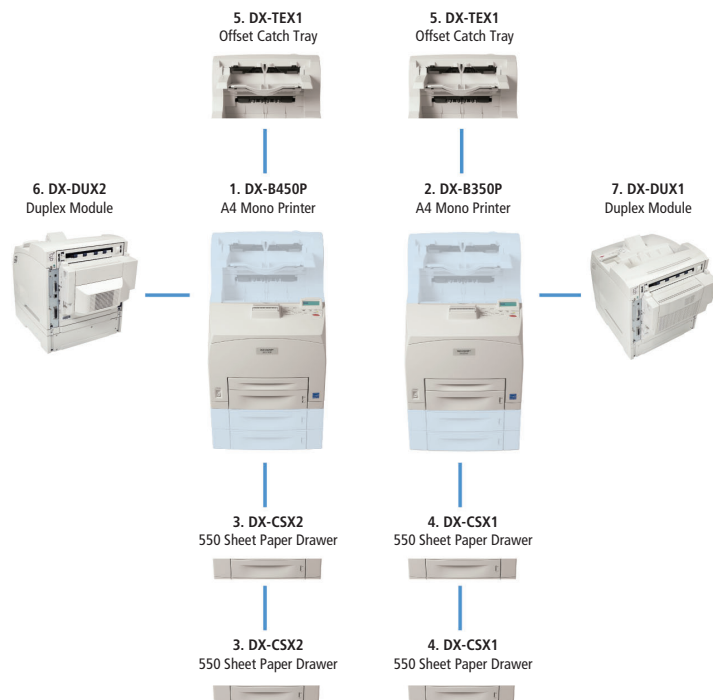
\*2 Based on 75 g/m<sup>2</sup>

\*3 When feeding A4 sheets from first paper drawer



## DX-B450P/DX-B350P OPTIONS

- DX-B450P A4 Mono Printer**  
Base Unit
  - DX-B350P A4 Mono Printer**  
Base Unit
  - DX-CSX2 550 Sheet Paper Drawer (for DX-B450P)**  
A6 - A4; 550 sheets; 64 - 216 g/m<sup>2</sup>
  - DX-CSX1 550 Sheet Paper Drawer (for DX-B350P)**  
A6 - A4; 550 sheets; 64 - 216 g/m<sup>2</sup>
  - DX-TEX1 Offset Catch Tray (for DX-B450P & DX-B350P)**  
500 sheet output capacity; 64 - 216 g/m<sup>2</sup>
  - DX-DUX2 Duplex Module (for DX-B450P)**  
Double sided printing; 64 - 216 g/m<sup>2</sup>
  - DX-DUX1 Duplex Module (for DX-B350P)**  
Double sided printing; 64 - 216 g/m<sup>2</sup>
- Printer Memory**
- 40 GB Hard Drive**
- Compact Flash Memory**



# SHARP

Design and specifications are subject to change without prior notice. All information was correct at time of print. The ENERGY STAR logo is a certification mark and may only be used to certify specific products that have been determined to meet the ENERGY STAR programme requirements. ENERGY STAR is a US registered mark. Windows and Windows NT are registered trademarks of Microsoft Corporation. Citrix is a trademark of Citrix Systems, Inc. and/or one or more of its subsidiaries, and may be registered in the United States Patent and Trademark Office and in other countries. All other company names, product names and logotypes are trademarks or registered trademarks of their respective owners. ©Sharp Corporation 05-2009 Ref: DX-B450P/DX-B350P. All rights reserved. All trademarks acknowledged. E&OE.