

SHARP

MX-M753U / MX-M623U
Digital Multifunctional System



**Exceptional Performance for
Demanding Office Workloads**



75/62 PPM

1,200 x 1,200
dpi Print
Resolution

Large Colour
Touch Screen
LCD Display



Power and productivity at the heart of your office

The MX-M753U and MX-M623U set a new standard for departmental MFPs. Not only do they deliver the exceptional print and copy speeds needed by document-intensive environments but everything about them has been designed to significantly increase workgroup productivity.

The combination of optional fast colour network scanning, powerful print and fax features means that the MX-M753U and MX-M623U can be placed at the heart of your office operations. And, thanks to a large expandable paper supply and our long life toner, you'll experience fewer interruptions to your workflow.

They're easy to use, too. The large, 8.5" colour touch screen control panel makes every feature intuitively accessible - including the advanced stapling, hole punching and booklet making options offered by the 100-sheet staple and saddle stitch finishers. Thumbnail views let you preview jobs before you start them and you can even customise the home screen by changing the colour scheme and adding 'short cut' keys for frequently accessed functions.

And if someone ever does need help, your IT staff can view and operate the MFP's front panel display from anywhere on the network, thanks to the innovative Remote Access Front Panel feature.

Thoughtful design

You'll find lots of thoughtful features on the MX-M753U and MX-M623U. The paper drawers have 'easy grip' handles making them easier to open and close and you can specify a QWERTY keyboard for data entry and emailing, which tucks neatly out of the way when not in use. Everyone will love the contemporary design with grained exterior that makes these new MFPs a perfect choice for any modern office.

They can also be supplied with Sharp OSA® (Open Systems Architecture), which gives you access to a wide range of third party software solutions that can automate many manual office tasks, such as the storing and management of documents, or the processing of forms.





Retractable Keyboard



Easy Grip Drawer Handles

MX-M753U / MX-M623U - Key Features

Highly productive operation

- Speedy output of max. 75/62 ppm and fast first copy time of 3.5/4.0 sec.
- Finishing options include inserter, bi-folding saddle stitch finisher and 100-sheet staple finisher
- Built-in stackless duplex module and 150-sheet Duplex Single Pass Feeder
- 75 opm scan speed for two and one sided originals in colour and B/W
- Standard 80GB hard disk and electronic sorting
- Standard 3,100-sheet paper capacity, expandable to max. 6,600 sheets
- Network tandem function doubles output speed by linking two MFPs
- Job Build function for large-volume documents

Enhanced usability

- Sharp OSA (Open Systems Architecture)*¹ allows integration with network applications and makes them accessible from the LCD control panel
- 8.5-inch colour touch screen LCD enables easy operation of key functions
- Control panel can be remotely displayed and operated on a PC*²
- Retractable QWERTY keyboard (option) allows easy text entry
- Easy-grip handles allow for easy opening/closing of paper drawers

All-in-one performance

- Supports Gigabit Ethernet and the latest network protocols and operating systems for network printing*³
- Optional PCL6/PCL5e and PS3 emulation
- Full colour network scanning*⁴ with scan to e-mail/FTP server/desktop/network folder/USB, and support for TIFF, PDF, encrypted PDF, JPEG (colour only), XPS and high-compression PDF*⁵ formats
- USB port at the front of the MFP allows easy scan to/print from USB memory
- Sharpdesk for integrated, intuitive document management on a PC
- Document Filing function for instantly reusing job data stored on the HDD
- Optional Super G3 fax and Internet fax that supports direct SMTP
- LDAP support for easy browsing of e-mail addresses and fax numbers

Breathtaking image quality

- High-resolution imaging with 256-level grayscale; clearly reproduces fine lines, small text, and delicate halftones
- True 1,200 x 1,200 dpi high quality printing without sacrificing speed
- Fine, smooth copying at 600 dpi (multi bit)
- Seven exposure modes including Auto and Text/Photo provide optimum copy quality

Multi-layered security solutions

- Optional Data Security Kit encrypts and erases data retained inside the MFP
- Supports the IEEE 802.1X standard for port-based network access control
- Function-specific user authentication
- External Active Directory server allows user authentication management of multiple MFPs and of a greater number of users
- IP/MAC address filtering restricts unauthorised access
- SSL and IPsec enable data encryption for secure network communications
- Encrypted PDF with password protection for secure scanning
- Document Control function*⁶ prevents unauthorised copying, scanning, faxing and filing of confidential documents

Environmentally advanced design

- Certified for Energy Star
- Energy-saving design (less than 1W in standby for fax reception)
- Manual power save key
- Toner Save mode lets you reduce toner consumption on non-critical documents

*¹ Requires optional MX-AMX2/MX-AMX3

*² Requires VNC application

*³ Requires optional MX-PB13

*⁴ Requires optional MX-NSX1

*⁵ Requires optional MX-EBX3

*⁶ Requires optional Data Security Kit (MX-FR22 / MX-FR22U)



**100-Sheet
Staple Finisher**



Up to **6,600
Sheet** Paper
Capacity

Fast, productive printing

With optional network printing*¹, the MX-M623U can print at an impressive 62 ppm. For even faster performance, invest in the 75 ppm MX-M753U. Whichever you decide you'll find that Sharp's specially formulated toner and developer delivers superb quality, with true 1,200 x 1,200 dpi print resolution even at maximum print speeds.

But there's a lot more to these MFPs than pure print speed. The MX-M753U and MX-M623U have been engineered for maximum productivity in the busiest offices.

The standard paper capacity - a generous 3,100 sheets - can be expanded right the way up to 6,600 sheets for long print runs and fewer interruptions, and if that still isn't enough you can double the capacity - and effective output speed - by sharing a job between two MFPs.

Sophisticated finishing options

Complex and professional-looking documents are easy to produce, thanks to a range of advanced finishing options for automatic hole punching, stapling and post-production document insertion, plus a 100-sheet stapler and a bi-folding saddle stitch finisher for making multi-page booklets. An 80GB hard drive and powerful processor help to keep production times as short as possible.

Special applications

Other useful features give you the convenience of printing directly from USB memory sticks, the ability to print 'proof sets' before committing to long print runs and direct printing from web pages, email attachments and FTP servers, for example.

At a glance

- Choice of models with print speeds of either **62 or 75 ppm**.
- **True 1,200 x 1,200 dpi resolution**, even at maximum print speeds.
- **Stackless duplex module** saves you filing space and money.
- **Network printing*¹ supports Gigabit Ethernet** and the most commonly used network operating systems and protocols.
- **USB memory direct printing** - conveniently print data directly from most USB memory devices, without the need for a PC.
- **XPS/PDF/TIFF/JPEG direct print*²** - save time by printing XPS, PDF, TIFF or JPEG files without using the printer driver, either by calling and printing the file directly from an FTP server, direct printing from a Web page, or direct printing of e-mail attachments.
- **Optional PCL5e and PCL6** and PS3 emulation*³.
- **Network tandem function** - double the effective output speed by sharing jobs between two sets of MX-M753U and/or MX-M623U on the same network.
- **Proof printing** - check a trial set before printing out a multi-page document in large numbers.
- **Barcode font** print compatibility*⁴.

*¹ Requires optional MX-PB13.

*² Requires optional MX-PKX1 for PDF direct printing and MX-PUX1 & MX-SMX3 for XPS. May not support all formats.

*³ PS3 requires MX-PKX1.

*⁴ Requires optional AR-PF1.

Finishing Options



Fast First Copy
3.5 Seconds



150-Sheet DSPF



75/62 CPM

Effortless **high quality** copying

The MX-M753U and MX-M623U are perfect for document-intensive environments and any busy workgroup. They can produce flawless copies at the same fast speeds as they achieve when printing (75 and 62 cpm respectively) and because the first copy appears in four seconds or less everyone stays productive.

The 600 x 600 dpi image resolution is supported by a 256-level greyscale for fine lines and delicate halftones, while seven exposure modes, including Auto and Text/Photo, make sure that you always get optimum quality from all types of original.

Double-sided copying on paper up to A3 is easy, thanks to the 150-sheet Duplex Single Pass Feeder, and the MX-M753U and MX-M623U will even recognise original documents of mixed sizes and choose the appropriate paper to print on.

A wide range of advanced copying functions are included as standard, such as Job Build, which makes it easy to take on even the biggest copying challenges, and Proof Copy which lets you produce a test set before committing to a long run.

Other powerful features include Book Copy, for copying bound originals directly into pamphlet format; Card Shot, which lets you copy both sides of a card, such as an ID card or licence, on to one page in a one-touch operation, and Tab Copy/Print for copying or printing on to the tabs on document separators.

At a glance

- **Fast first copy time*** of just 3.5 seconds (4.0 seconds with MX-M623U).
- **High-speed 150-sheet A3 Duplex Single Pass Feeder (DSPF)** for quick and easy double-sided copying.
- **Mixed Size Original Copy** mode automatically recognises documents of different sizes and chooses the appropriate paper.
- **Job Build function** for easier management of large, multi-page jobs even if they exceed the capacity of the DSPF.
- **Image editing functions**, including multi-shot, multi-page enlargement, image repeat and mirror image for extra versatility.
- **Proof copy function** lets you produce a test set of documents before committing to a long run.
- **Cover/transparency insertion** for the effortless creation of professional-looking documents.

*Best achieved time based on A4 copy, long edge feeding from 1st paper drawer, using document glass, when machine is ready. May vary depending on machine conditions and operating environment.

for **Demanding Office Workloads**



75 OPM
Scan Speed



Scan to **Email**,
Network, **PC**,
FTP or **USB**

Fast colour network scanning

When it comes to scanning*¹, the MX-M753U and MX-M623U MFPs are built for speed, with a capacity of up to 75 originals per minute: full colour or black and white, single- or double-sided.

For extra convenience, a space-saving retractable QWERTY keyboard can be added, which makes it easy to add data to scanned documents and send them to multiple destinations. These can include email recipients, network folders, FTP servers, your desktop, or a USB memory stick.

You can also scan documents directly to a choice of formats including XPS, JPEG, TIFF and PDF, as well as the high-compression PDF format*² for smaller files, faster transfers and lower network overheads.

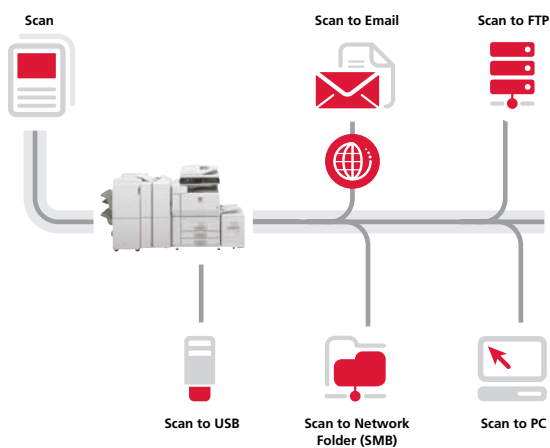
At a glance

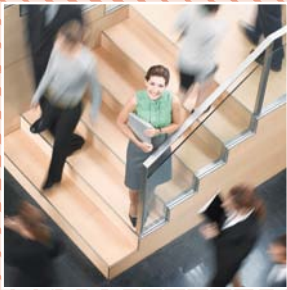
- **Full-colour scanning*¹** to your PC, e-mail recipients, FTP servers, network folders, or a memory stick that plugs into an easily accessible USB port.
- **Skip Blank Page** detects blank pages in a document and provides the opportunity to scan only the pages containing data.
- The **Suppress Background** feature will output documents with whiter, brighter backgrounds.
- **Optional retractable QWERTY keyboard** for easy data entry.
- DSPF scans both sides of the page simultaneously at a speed of **75 originals per minute**.
- **Mixed-size original scanning** automatically accommodates documents of different sizes.
- Compatible with **TWAIN-compliant network applications**.
- **Optional Network Scanning*¹** includes Sharpdesk*³ document management software.
- **Lightweight Directory Access Protocol (LDAP)** allows easy browsing of e-mail addresses for rapid distribution of scanned documents, as well as automatic synchronisation with your primary e-mail server.
- **Scan directly** to XPS, TIFF, JPEG, PDF, encrypted PDF and high-compression PDF*².

*¹ Requires optional MX-NSX1.

*² Requires optional MX-EBX3.

*³ Includes 10 Sharpdesk licenses.





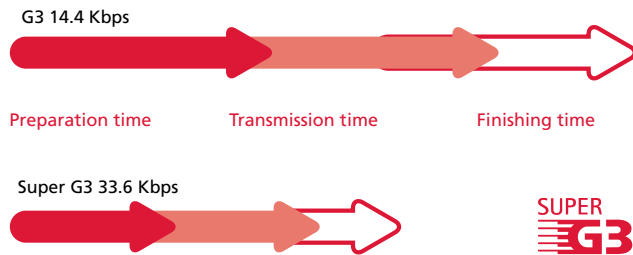
Paperless Faxing



Automated Finishing

Versatile faxing

You can extend the functionality of these MFPs even further with the optional fax expansion kit. Documents can either be scanned and sent over ultra-fast 33,600 bps Super G3 fax, or you can simply send digital files directly from your PC with the PC-Fax*¹/PC-Internet Fax*² function.



When faxes arrive, they can be automatically routed to a mailbox without being printed and you can preview images to help you decide which ones to print out.

Automated fax finishing

A built-in duplex module saves resources by automatically printing inbound faxes on both sides of the page; you can set the machine to automatically make copies for distribution, and if you have an optional finisher installed it will even staple multi-page faxes to keep them organised.

At a glance

- **Send or receive** single or double-sided faxes up to A3 in size.
- **Super G3/JBIG compression** for extra speed and online transmission for faster operation.
- **Transmits faxes** in less than three seconds.
- **One-touch dialling** of up to 1,000 stored numbers.
- **Can broadcast faxes** to as many as 500 destinations.
- **Paperless faxing** with inbound routing and thumbnail previews lets you decide which faxes to print.
- **Flash memory** prevents data loss in a power failure.
- **Duplex faxing** lets you scan and send two-sided documents and print incoming faxes onto both sides of paper.
- **Internet Fax*² with Direct SMTP support** means that outgoing internet faxes do not go via the mail server, making transmission faster and cheaper.
- **PC-Fax*¹/PC-Internet Fax*²** lets you send directly from a PC to a fax machine without printing to paper.
- **Fax Destination Confirmation** prevent transmission errors by letting you reconfirm fax numbers before sending.

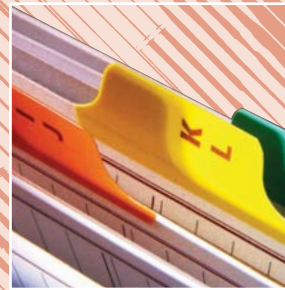
*¹ Requires optional MX-FXX2.

*² Requires optional MX-FWX1.

for **Demanding Office Workloads**



Sharp OSA®



Sharpdesk

Powerful **document** management

Your new Sharp MFP comes complete with everything you need to manage your document workflow. An 80GB integrated hard drive gives you plenty of space to save scanned files for future retrieval and you can even store and repeat entire print runs without recreating the job.

Up to **3,000 files or 20,000 pages***¹ of copy, print, scan, and fax*² data can be saved for **long-term storage in up to 1,000 shared folders**, and up to **1,000 files or 10,000 pages***¹ placed in **temporary storage** for repeating jobs without having to recreate them. To access them, simply browse the thumbnail previews on the LCD panel, make a selection and enter your PIN.

Easy document management with Sharpdesk

The MX-M753U and MX-M623U are supplied with the latest, new look version of Sharpdesk*³, our powerful yet easy to use document management software. Now supplied with a central management utility for remote, single-point installation on multiple network clients via Active Directory, Sharpdesk lets users manage and manipulate documents in over 200 file formats in a single application on the PC desktop, integrating digital paper documents.

- Intuitive desktop display features **thumbnail viewing**.
- Convenient **remote 'push' installation** via Active Directory.
- Sharpdesk Imaging provides **annotation tools** for paper-free proofreading.
- Sharpdesk **Composer** combines different types of files into a single document.
- **Optical character recognition** converts documents into editable text files.
- **Output zone** distributes files to e-mail, printers and other applications.
- **File search** allows searching by file name, keyword or thumbnail.

Sharp OSA® (Open Systems Architecture)

You can further enhance the productivity of the MX-M753U and MX-M623U thanks to Sharp OSA (Open Systems Architecture), which lets 3rd party developers directly integrate the MFP with your business applications. There are three optional Sharp OSA modules:

- **Application Integration Module (MX-AMX1)** - lets users add data to scanned documents before sending them directly to applications for processing and archiving.
- **Application Communication Module (MX-AMX2)** - lets remote applications create, configure, and execute scanning and printing jobs on the MFP.
- **External Account Module (MX-AMX3)** - tracks usage by individuals and workgroups and restricts usage according to individual access rights.

*¹ Measured using Sharp's standard chart (A4 with 6% coverage, B/W). The Quick File Folder shares the HDD with the Job Build function; up to 12GB of data storage is available when using both functions. The storage capacity will be less for colour pages.

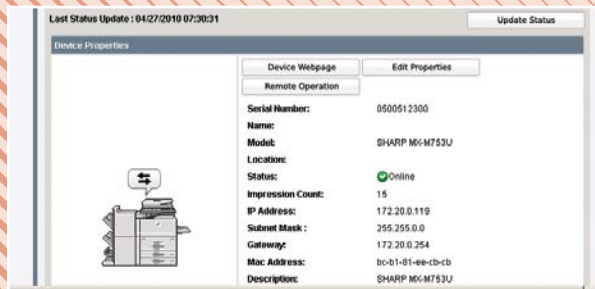
*² For fax and Internet fax jobs, only transmitted data (not received faxes) can be saved in the Document Filing function.

*³ Requires optional MX-NSX1 which includes 10 Sharpdesk licenses.





Remote Front Panel



Printer Administration Utility

Integrated **device** management

Like all Sharp MFPs, the MX-M753U and MX-M623U are easy to configure and support, and multiple devices can be managed from a single remote location. The result is minimum time and effort for maximum work efficiency.

Web-based system settings

Administrators can configure important system settings such as address book control, document filing management, and operator access control from across the network as well as from the front control panel.

Access control

You can keep control of running costs by restricting who can use the MFP and for what purpose, giving permission to carry out long print or copy runs to specific individuals only, for example.

Access and usage rights can be set up for different workgroups and departments, with further control achieved through the configuration of up to 1,000 password-protected user accounts with customised settings.

Remote diagnosis

The MX-M753U and MX-M623U can be monitored remotely through a web browser and conditions such as 'Low Toner' will appear on the MFP's web page. In addition, features such as E-Mail Status and Alert will automatically create and send email alerts when corrective action or maintenance is required.

Network utility software

Sharp's Printer Administration Utility* (PAU), makes the configuration of printers and MFPs quicker and easier than ever before. With PAU, you can monitor any SNMP-compliant printer on the network, without ever leaving your desk and enjoy complete, real-time control of your printer fleet through any standard web browser. Error-reporting, technical support, driver installation, printer configuration: everything is easier and more accessible.

Another network utility, **Sharp Printer Status Monitor***, lets people check the MFP's operating status, toner levels, paper supplies and features before they start a job, as well as displaying an icon on the desktop when the work has been completed and the documents are ready for collection.

Device cloning for rapid deployment

It is quick and easy to deploy Sharp MFPs. Simply set up the first one, copy its settings and then transfer the entire configuration to each additional machine via a web browser. For extra convenience, you can edit the settings before transferring them.

Remote front panel for easier support

The remote front panel feature saves time and effort while minimising downtime by letting your support staff view and operate the MFP's control panel without leaving their desks. The support technician simply opens a web browser and either fixes the problem directly or gives step-by-step training to the operator to achieve the same result.

* Requires optional MX-PB13.

for **Demanding Office Workloads**



Data Security

Document Control



Industry-leading multi-layer security

The MX-M753U and MX-M623U safeguard sensitive data with powerful encryption technology and advanced security functions that provide multiple levels of network and data security.

Data Security Kit

Digital copiers, printers and MFPs can retain hundreds of pages of confidential information from previous jobs on their hard disks or internal memory. To protect this information from unauthorised access, the optional Data Security Kit automatically encrypts the data or securely erases it on completion of the job. It also encrypts the address book.

Document Control Function

Document Control*¹ prevents the unauthorised copying, scanning, faxing and filing of confidential documents by adding copy-prevention data to a document when it is first copied or printed. If someone subsequently tries to make a copy of the document, the MFP detects this data and cancels the job or outputs a blank page*².

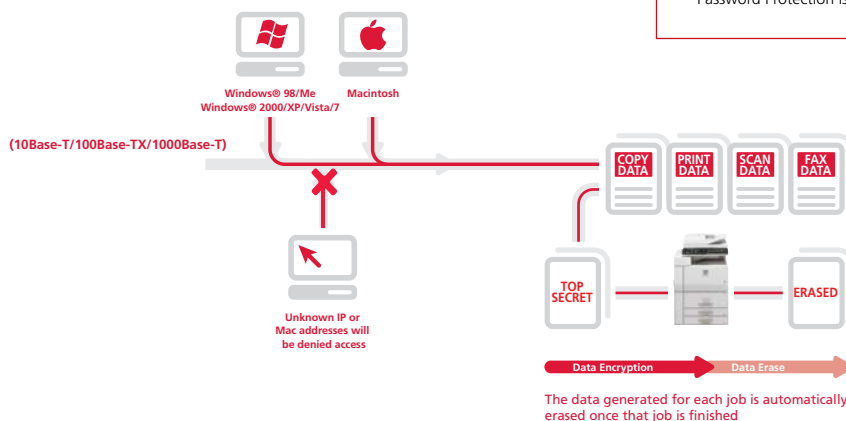
At a glance

- **Optional Data Security Kit** encrypts data on the hard disk and internal memory, removing it safely and completely after use.
- **Secure Network Card** provides network port and protocol management to prevent direct connection and access by unauthorised users.
- **Secure Sockets Layer (SSL)** and IPsec encrypts data communications to prevent data leakage through the network.
- **Encrypted PDF** with password protection prevents unauthorised viewing of confidential image data.
- **Document Control*¹** prevents unauthorised copying, scanning, faxing and filing.
- **Supports IEEE 802.1X standard** for port based network control.
- **User authentication** requires logging into the machine with passwords for machine access.
- **Confidential data storage and printing** protects sensitive information by requiring the user to enter a PIN code before the documents are produced.
- **Secure data storage for Document Filing*¹** - all data that goes through the hard disk is encrypted, while passwords used in the Advanced Filing function ensure solid security*³.

*¹ Requires optional Data Security Kit. Document Control Function may not work for certain types of documents and paper.

*² May output a blank page if paper has already been fed for the job before the MFP detects the copy prevention data.

*³ Password Protection is provided as standard. Encryption is optional.



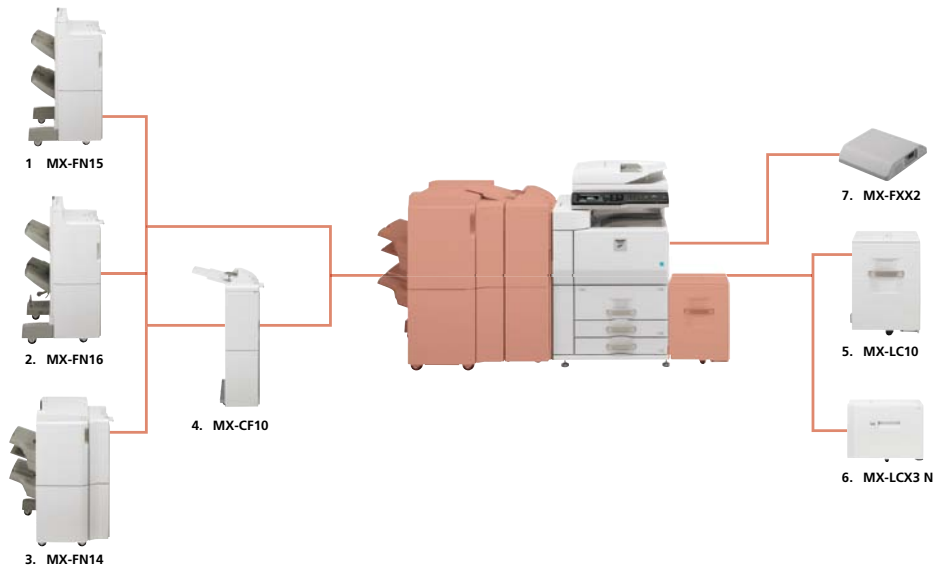


Finishing Options



Connectivity Options

MX-M753U / MX-M623U - Options



Finishing

- MX-FN15 Finisher**
A3 to B5 (offset/staple), A3 to A5R (non offset)
Upper/lower tray: max. 2,000 sheet paper capacity*¹
Stapling capacity: max. 50 sheet multi-position staple*¹
Staple position: 3 locations (front, rear or 2 point stitching)

- MX-FN16 Saddle Stitch Finisher**
A3 to B5 (offset/staple), A3 to A5R (non offset)
Upper/lower tray: max. 2,000 sheet paper capacity*¹
Stapling capacity: max. 50 sheet multi-position staple*¹
Staple position: 3 locations (front, rear or 2 point stitching)
Saddle stitch tray (lower): 10 sets (11 to 15 sheets),
20 sets (6 to 10 sheets), 25 sets (1 to 5 sheets)

Optional Punch Module for MX-FN15 & MX-FN16

- AR-PN4A – 2 Hole Punch Module
- AR-PN4C – 4 Hole Punch Module
- AR-PN4D – 4 Hole Wide Punch Module

- MX-FN14 Finisher (100 sheet staple)**
A3 to B5 (offset/staple), A3 to A5R (non offset)
Upper tray: max. 1,500 sheet paper capacity*¹
Middle tray: max. 250 sheet paper capacity*¹
Lower tray: max. 2,500 sheet paper capacity*¹
Stapling capacity: max. 100 sheet multi-position staple*¹
Staple position: 3 locations (front, rear or 2 point stitching)

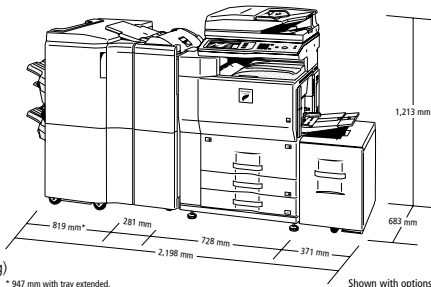
Optional Punch Module for MX-FN14

- MX-PN10A – 2 Hole Punch Module
- MX-PN10C – 4 Hole Punch Module
- MX-PN10D – 4 Hole Wide Punch Module

- MX-CF10 Inserter*²**
A3 to A5R*³, 60 to 256g/m², 100 sheets (80g/m²)

Base Unit

- MX-LC10 Large Capacity Tray (A4)**
A4 to B5, 3,500 sheets (80g/m²)
- MX-LCX3 N Large Capacity Tray (A3)**
A3 to B5, 3,000 sheets (80g/m²)



- *¹ A4 or smaller, 80g/m²
- *² Requires MX-FN14, MX-FN15 or MX-FN16
- *³ Excluding A5
- *⁴ Requires MX-PB13
- *⁵ Requires MX-PB13 & MX-SMX3
- *⁶ Requires MX-NSX1
- *⁷ Available at a later date

Some options may not be available in some areas

Connectivity Board

- MX-KBX2 Keyboard
- MX-SMX3 Expansion Memory Board (1GB)

Printing

- MX-PB13 Printer Expansion Kit
- MX-PKX1 P53 Expansion Kit*⁴
- MX-PUX1 XPS Expansion Kit*⁵
- AR-PF1 Barcode Font Kit*⁴

Faxing

- MX-FXX2 Fax Expansion Kit**
Super G3 fax module
- MX-FWX1 Internet Fax Expansion Kit**

Scanning

- MX-NSX1 Network Scanner Expansion Kit
Includes 10 Sharpdesk licenses
- MX-EBX3 Enhanced Compression Kit*⁶
- AR-SU1 Stamp Unit
Marks already scanned documents for checking

Sharpdesk Licenses

- MX-USX1 x 1 user
- MX-US10 x 10 users
- MX-US50 x 50 users
- MX-USX5 x 5 users
- MX-US50 x 50 users
- MX-USA0 x 100 users

Security

- MX-FR22U Data Security Kit Commercial Version
- MX-FR22 Data Security Kit Common Criteria Certified*⁷

Sharp OSA*⁸

- MX-AMX1 Application Integration Module*⁶
- MX-AMX2 Application Communication Module
- MX-AMX3 External Account Module

Specifications

MX-M753U / MX-M623U Digital Multifunctional System



General		
Engine speed (max)	A4	A3
MX-M753U	75 ppm/cpm	39 ppm/cpm
MX-M623U	62 ppm/cpm	34 ppm/cpm
Paper size	Max. A3 - Min. A5R	
Paper weight	Drawers 1 & 2:	60 g/m ² - 105 g/m ²
	Drawers 3 & 4:	60 g/m ² - 209 g/m ²
	Large-capacity tray:	60 g/m ² - 105 g/m ²
	Multi-bypass tray:	56 g/m ² - 209 g/m ²
Paper capacity	Standard: 3,100 sheets (1 x 2,000-sheet drawer (1,200 + 800), 2 x 500-sheet drawers and 100-sheet multi-bypass tray) Maximum: 6,600 sheets (1 x 2,000-sheet drawer (1,200 + 800), 2 x 500-sheet drawers, 3,500-sheet large capacity tray and 100-sheet multi-bypass tray)	
Warm-up time¹¹	Less than 30 sec.	
Memory	(Copier) Std. 512MB (Printer) Std. 1GB, Max. 2GB HDD ¹² : 80GB	
Power requirements	Rated local AC voltage ±10%, 50/60 Hz	
Power consumption (max.)	1.84 kW (220 to 240V)	
Dimensions (W x D x H)	728 x 683 x 1,213 mm	
Weight	190 kg	

Copier	
Original paper size	Max. A3
First copy time¹³ (sec)	MX-M753U: 3.5 MX-M623U: 4.0
Continuous copy	Max. 999 copies
Resolution	600 x 600 dpi
Gradation	Equivalent to 256 levels
Zoom range	25 - 400% (25 - 200% using DSPF) in 1% increments
Preset copy ratios	10 ratios (5R/5E)

Network Colour Scanner (requires optional MX-NSX1)	
Scan method	Push scan (via control panel) Pull scan (with TWAIN-supporting application)
Resolution	Push scan: 100, 200, 300, 400, 600 dpi Pull scan: 75, 100, 150, 200, 300, 400, 600 dpi; 50 to 9600 dpi
File formats	TIFF, PDF, encrypted PDF, JPEG (colour only), XPS ¹⁴ and high-compression PDF ¹⁵ formats
Scanner utilities	Sharpdesk (10 licenses)
Scan destinations	Scan to e-mail, desktop, FTP server, network folder, USB memory, Opt. i-Fax

Document Filing	
Document filing capacity	Main & custom folders: 38GB, 20,000 pages ¹⁶ or 3,000 files Quick file folder: 12GB, 10,000 pages ¹⁶ or 1,000 files
Stored jobs	Copy, print, scan, fax transmission ¹⁷
Storage folders	Quick file folder, main folder, custom folder (max. 1,000 folders)
Confidential storage	Password protection
Network Printer (requires optional MX-PB13)	
Resolution	1,200 x 1,200 dpi 600 x 600 dpi
Interface	USB 2.0, 10Base-T, 100Base-TX, 1000Base-T
Supported OS¹⁸	Standard: Windows 2000, XP, Vista, 7, Server 2003, Server 2008, Server 2008R2 Optional: Mac OS 9.0 - 9.2.2, Mac OS X 10.2.8, 10.3.9, 10.4.11, 10.5 - 10.5.8, 10.6 - 10.6.2
Network protocols¹⁸	TCP/IP (IPv4, IPv6), IPX/SPX (NetWare), NetBEUI, EtherTalk (AppleTalk)
Printing protocols	LPR, Raw TCP (port 9100), POP3 (e-mail printing), HTTP, Novell Printserver application with NDS and Bindery, FTP for downloading print files, EtherTalk printing, IPP
PDL emulation	Standard: PCL6/PCL5e emulation Option: PS3 ¹⁹ emulation, XPS ¹⁹
Available fonts	80 fonts for PCL, 136 fonts for PS3 emulation
Bundled utility software	Sharp Printer Administration Utility Sharp Printer Status Monitor

B/W Facsimile (requires optional MX-FXX2)	
Compression method	MH/MR/MMR/JBIG
Communication protocol	Super G3/G3
Transmission time	Less than 3 sec ¹⁰
Modem speed	33,600 bps to 2,400 bps with automatic fallback
Transmission resolution	Standard: 203.2 x 97.8 dpi Ultra Fine: 406.4 x 391 dpi
Recording width	A3 to A5
Memory	8MB flash memory
Grey scale levels	Equivalent to 256 levels



¹¹ At rated voltage. May vary depending on machine conditions and operating environment. ¹² 1GB = One billion bytes when referring to hard drive capacity. Actual formatted capacity is less. ¹³ Best achieved time based on A4 copy, long edge feeding from 1st paper drawer, using document glass, when machine is ready. May vary depending on machine conditions and operating environment. ¹⁴ To view XPS files on PCs not running Windows Vista, you must have the XPS Viewer application installed. ¹⁵ Requires optional MX-EBX3 ¹⁶ Measured using Sharp's standard chart (A4 with 6% coverage, B/W). The Quick File Folder shares the HDD with the Job Build function; up to 12GB of data storage is available when using both functions. The storage capacity will be less for colour pages. ¹⁷ Requires optional MX-FXX2. ¹⁸ Requires optional MX-PKX1 for Mac OS, EtherTalk and PS3. ¹⁹ Requires optional MX-PUX1 and MX-SMX3 (1GB) for XPS. ²⁰ Based on Sharp's standard chart with approx. 700 characters (A4 portrait) at standard resolution in Super G3 mode, 33,600 bps, JBIG compression.



Design and specifications are subject to change without prior notice. All information was correct at time of print. The ENERGY STAR logo is a certification mark and may only be used to certify specific products that have been determined to meet the ENERGY STAR programme requirements. ENERGY STAR is a US registered mark. Windows, Windows NT, Windows XP and Windows Vista are registered trademarks of Microsoft Corporation. Citrix is a trademark of Citrix Systems, Inc. and/or one or more of its subsidiaries, and may be registered in the United States Patent and Trademark Office and in other countries. All other company names, product names and logos are trademarks or registered trademarks of their respective owners. ©Sharp Corporation 05-2010 Ref: DS-MX-M753U/MX-M623U. All trademarks acknowledged. E&OE.